

# Extraction Tools for Total Hip Replacements

## EPM Mueller® Stem Extractor SA2 - for anterior approche

„Knockout Tool for Joint Prosthesis“

CE, ISO 13485

FDA Establishment Registration Number: 3003759646

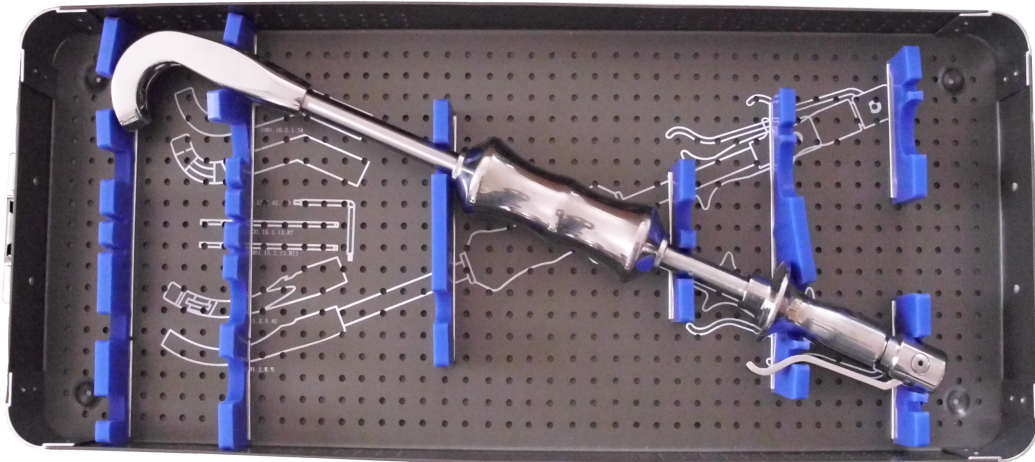
Patented in most countries, USA Pat.Nr.5.534.006, USA Pat.Nr. 8.603.100B2,

USA Pat.Nr. 9.089.440, EP 0.645.127, DE 43.32.872 C1

## Technical Documentation



EPM Mueller® Stem Extractor SA2



EPM Mueller® Stem Extractor SA2.St. In Alu-Box

[www.epm-mueller.de](http://www.epm-mueller.de)

# Technical Documentation

## Table of Contents:

1. Introduction
2. Definition of Medical and Technical Purpose
3. Finite-Element-Modeling (FEM) Analysis of Revision with Conventional Extraction Tools
  - 3.1. Finite-Element-Modeling (FEM), Conditions and Loads
  - 3.2 Results and Discussion
4. Principle and Construction
5. Measurements of Functional Prototype
6. The EPM Mueller Extractor
7. FEM-Analysis of Revision with the EPM Mueller Extractor
8. Surgery Use in Garmisch-Partenkirchen-Hospital
9. Use Instructions
  - 9.1. Description
  - 9.2. Components
  - 9.3. Handling
    - 9.3.1 Opening
    - 9.3.2 Application, Clamping
    - 9.3.3 Explantation
    - 9.3.4 Detachment
  - 9.4. Cleaning, Sterilization
  - 9.5. Care instruction
  - 9.6. Technical Data
  - 9.7. Accessories
  - 9.8. Guarantee, Service
  - 9.9.
10. Conformity Declaration

Developed by EPM Endo Plant Müller GmbH  
Copyright ©1993-2019  
EPM Endo Plant Müller GmbH · Schleusen Str. 8, 63839 Kleinwallstadt  
Tel.: +49-(0)6022/25419 · Fax: +49-(0)6022/ 25419  
e-mail: epmmueller@aol.com  
Ust - IdNr.: 180825097, Registered Aschaffenburg, HRB 8276  
Manager: E.J. Müller MD., MDstom.

## 1. Introduction

Since its inception in the early 60's, total hip replacement surgery has become enormously important; today it is one of the most successful surgical interventions in orthopedics.

One of the problems in total hip replacement and joint replacement surgery in general, is the limited survival time of the implants which have not reached the biomechanical qualities of the natural hip joint. Today a survival time of 10 to 15 years is considered normal if no complications occur.

After years of implantation time the devices loosen aseptically. This loosening is induced by wear particles. A loose prosthesis causes pain, which makes a revision operation necessary. (Fig. 1)

One of the problems during Revision Operations is the removal of the femoral component from the femora. Even if the implant is loose and micro motion is possible, they are still fixed by soft tissue and therefore hard to remove.

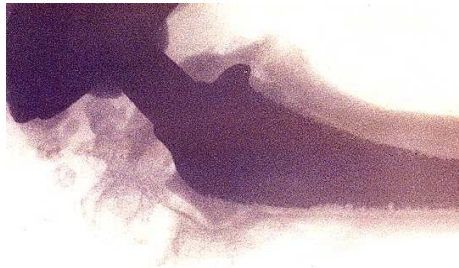


Fig. 1



Fig. 2

## 2. Definition of Medical and Technical Purposes

**2.1.** High, accurately directed forces have to be applied to the femoral component for short periods of time so that the extraction impulse only acts upon the femoral component itself. (Fig. 7)

**2.2.** The energy of the extraction impulse has to be so high that the connection between implant and femora (i.e. cement femora) is terminated before the energy of the impulse is transferred to the femora. (Fig. 5)

**2.3.** To achieve this, uniaxial force transfer is necessary as well as an extremely high connection force between instrument and femoral component. (Fig. 4)

**2.4.** The force vector has to be as close to the longitudinal axis of the femoral component as possible. (Fig. 4)

## 3. FEM-Analysis of Revision with Conventional Extraction Tools

To visualize the special relationships and magnitudes of force potentials, and to compare the loads acting upon the cortical bone of the femora in revisions of the femoral component, a finite element strain analysis of the femora while extracting a femoral component with different extraction devices was performed.

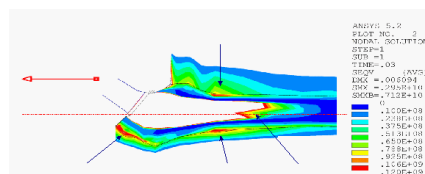


Abb. 3

### 3.2. Results and Discussion

To depict the strains inside the femurs and femoral components, the von-Mises-strains ( $s_{EQV}$ ) were used. The FEA was performed in a transient mode. The diagrams 3 and 7 show the von-Mises-strains at maximal extraction forces at  $t=30$  ms.

One can notice the non-homogenous distribution of strains inside the femoral component when conventional extraction tools are used. (Fig. 3). One can deduce an asymmetrical transfer of forces to the femora from this, which can only lead to a partial disconnection of the implant from the surrounding tissue. Therefore, multiple applications of the forces have to be performed.

Looking at the distribution of the strains in the cortical bone, extraction with conventional tools causes high strains on the whole (Fig. 3, ABC) and especially high maximal strains in the middle of the prosthesis and at the lower end of the prosthesis. (Fig. 3, D)

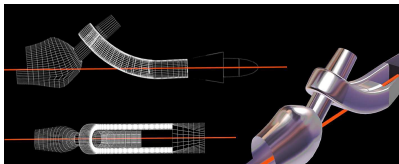
With the conventional extraction tools, the force vector is not directed along the longitudinal axis of the femoral component - in the optimal case it is only parallel to this axis ( $X_p$ ) - the femoral component therefore jams and is hard to remove. The energy impulse is conveyed laterally to the femora.

Fractures of the trochanter or the shaft of the femora can occur. (ABC). A misalignment between extraction vector and the longitudinal axis of the prosthesis can lead to injury of the bone surrounding the prosthesis, to fractures and associated lengthening of the surgical time and anesthesia, increasing of the risk of infection, etc.

### 4. Principle and Construction of the EPM Mueller® Extractor.

14. Provide Axial force transfer and maximal clamping force.
15. Ensure the necessary clamping force is transferred to the neck of the prosthesis via a curved toolhead. (Fig. 4).
16. The size of the toolhead is minimized because of limited space during surgery.

The instrument is handled outside of the surgical field.



(CAD picture) Fig.. 4

### 5. Measurements of Functional Prototype

The prototype was measured with a special trial set-up and a Piezo-force sensor. The profile of force application was registered to monitor change of force over time and calculate the transferred impulse.

A force was applied by hand via a weight against an infinitely hard base and registered by the Piezo-sensor. Data were acquired by an oscilloscope and stored.

The prototype of the extraction instrument is fixed and the weight (800g) is accelerated to about 10m/s.

During the whole time of the experiment, the oscilloscope stores the strain delivered by the Piezo-sensor (strain proportional to force). The impulse transfer time  $t$  is calculated from the strain-time-diagram. (Fig. 5).

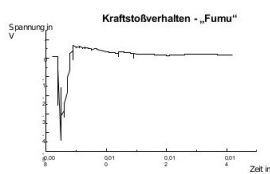


Fig. 5

**Results:**

From the graph of force transfer time of  $t=500\mu\text{s}$  can be derived.  
 A peak force of 50kN can be calculated for force transfer.  
 This peak force corresponds to a set-up with an infinitely hard base. In practical use an elastic fixation exists and consequently the measurements stated above will not be attained.  
 Duration of the force: 0,5ms (=0,0005s)  
 Amount of force: 50Ns  
 The impulse is high enough to overcome the holding forces inside of the bone and loosen the prosthesis.  
 The clamping mechanism reliably transfers the force to the implant.  
 Calculated clamping force at the neck of the prosthesis is 30kN.

## 6. The EPM Mueller® Stem Extractor

**EPM Mueller® Extractor AU2** -with open head on the side and one sliding spacer, proper also for stems with fixed heads ( monobloks)

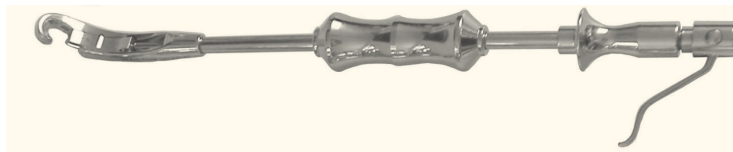


Fig. 6a

**EPM Mueller® Extractor S2** -closed head with single sliding spacer



Fig. 6b

**EPM Mueller® Extractor AU-S2** with 2 exchangeable heads (open AU+ closed S) and one sliding spacer

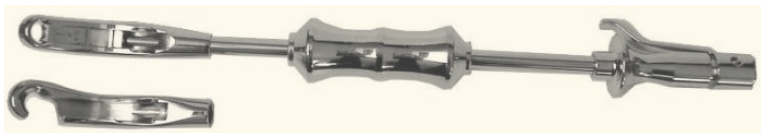


Fig. 6c

**EPM Mueller® Extractor SA2** for Antero-access revisions, with closed head and single slider spacer

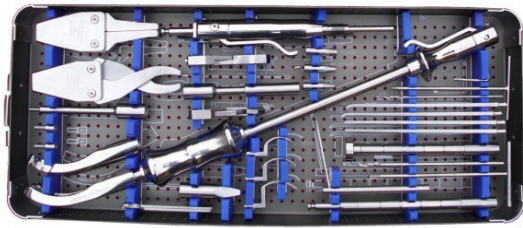


Fig.6d

The **EPM Mueller® Extractor AW6** has been in clinical use since 1993, the **EPM Mueller® Extractor AE ( ABC Extractor )**, the **EPM Mueller® Extractor AU** since 1999 and the **EPM Mueller® Extractor S** since 2004, the **EPM Mueller® Extractor PN** since 2007, the **EPM Mueller® Modular Extractor System 1** since 2009.

We launched 2014 the new **EPM Mueller® Extractor SA** for Anterior approach revisions, **EPM Mueller® Extractor MO** for modular stems and the **EPM Mueller® Modular Extractor System 2**, **EPM Mueller® Knee Extractor KN2** and **EPM Mueller® Cup Extractor C2**  
 We launched 2018 the new **EPM Mueller® Extractor SA2** for Anterior approach revisions and the **EPM Mueller® Knee Extractor KN3**





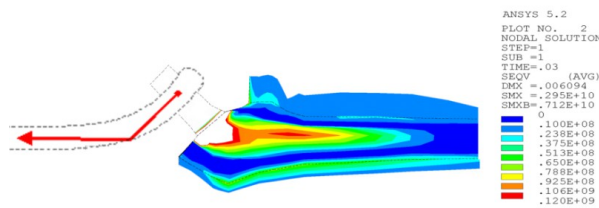
**EPM Mueller® Modular Extractor System 2.**

The EPM Mueller® Extractor is characterized by axial force transfer and exceptional clamping mechanism.

The necessary clamping force is transferred to the implant neck by a curved toolhead. The size of the toolhead is adapted to space restrictions dictated by the surgical procedure. The EPM Mueller® Extractor is handled outside of the surgical field. The EPM Mueller Extractor can be removed from the prosthesis after extraction via an easy snap-lock mechanism without additional tools. It can be disassembled and assembled easily and fits into a standard surgical tray.

Easy cleaning and sterilization are assured; the instrument is fully autoclavable.

## 7. FEM-Analysis of Revision with the EPM Mueller® Stem Extractor



**Fig. 7**

The direction of force of the EPM Mueller® Extractor (normal case) lies in the middle axis XY of the femora (Fig. 7).

The strain distribution in the prosthesis during extraction with the EPM Mueller Extractor is homogenous, which favors the detachment of the implant from spongiosa and soft tissue. Strain in the cortical bone is low and shows no peaks.

Therefore the risk of fracture of the cortical bone is minimized.

The EPM Mueller® Extractor is optimized for practical application. The extraction forces are applied to the relevant sides, the clamping force is extremely high and dependable and the device can universally be used for the most implant necks.

## 8. Surgical Use in Garmisch-Partenkirchen-Hospital of the EPM Mueller® Stem Extractor

The EPM Mueller® Extractor has been in clinical use in Garmisch-Partenkirchen-Hospital since October of 1993. At the time of writing, EPM Mueller Extractor has been used during over 600 total hip revision operations in the hospital. A large number of femoral components have been successfully removed; with only a few was extraction not possible. These failures were primarily in the experimental phase, using the prototypes (AW3/4); the geometry of the instrument head has since been changed accordingly.

EPM Mueller® Extractor AU has been in clinical use since 1999.

The remaining failures were due to a maximal stability of the implant in the surrounding bone, meaning an absence of loosening. Stable implants cannot be removed by an extraction tool alone.

To date no complications, for example bone fractures, have been noted.

Handling has proven to be safe and easy. The posture approach usually favored in GarmischPartenkirchen often leads to restricted available space at the operative site; the limited size of the toolhead and the handling of the instrument outside of the surgical field have therefore proven extremely useful.

The surgical personnel have praised easy handling, cleaning and sterilization of the EPM Mueller® Extractor. All parts of the EPM Mueller® Extractor can be assembled and disassembled with ease and safety.

The space needed for storage is minimal and since the instrument can be used universally it is not necessary to maintain a large inventory of extraction devices

## 9. Use Instructions

### 9.1.

## EPM Mueller® Stem Extractor SA2

Contents:

- 9.1. Description
- 9.2. Components
- 9.3. Handling
  - 9.3.1 Opening
  - 9.3.2 Application, Clamping
  - 9.3.3 Explantation
  - 9.3.4 Detachment
- 9.4. Cleaning, Sterilization
- 9.5. Care methods
- 9.6. Technical Data
- 9.7. Accessories
- 9.8. Guarantee, Service

### 9.1. DESCRIPTION

The universal extraction device for total hip replacement femoral components **EPM Mueller® Extractor** is a modern surgical instrument which addresses problems arising through the increasing number of revision surgeries in total joint replacement. It ensures secure, efficient, low cost and correct handling. Ergonomic aspects concerning the design of the grip and handling have been incorporated into manufacture as a result of ongoing feedback and development.

Key part of the instrument is the patented clamping mechanism and head with exceptional clamping force ensuring a secure connection between the instrument and almost all implant necks or tapers, commercially available today.

The applied force is transferred to the prosthesis' neck axially, thereby avoiding dangerous eccentric leverage.



EPM Mueller® Extractor SA2

## 9.2. COMPONENTS

- 1 Head of Tool
- 2 Sliding Spacer
- 3 Guiding Tube
- 4 Striking Weight
- 5 Pressure Rod
- 6 Handpiece
- 7 Jamcase
- 8 Pin screw
- 9 Bolt with plasticinset
- 10 Lever

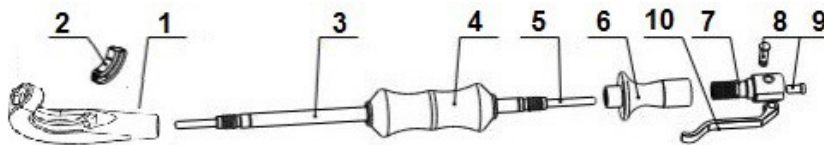


Fig. 8

## 9.3. HANDLING

The EPM Mueller Extractor is delivered completely assembled and ready for use.

( **NON STERILE!** )

Sterilization is the responsibility of the User.

### 9.3.1 OPENING ( Fig.9 )

Open the lever to 90° ( 1 ) and rotate the jam case with the opened lever( at 90° to the axis) at the distal-end with reverse clockwise movements( 2 ).

#### ATTENTION:

- only the thread between jamcase and handpiece ( working thread ) should open!
- the threads at the guiding tube have to be always closed completely!

To enable clamping, move the spacer back by putting pressure on spacer, or turn the head hook up and the spacer sleeves alone backwards ( 3 ).

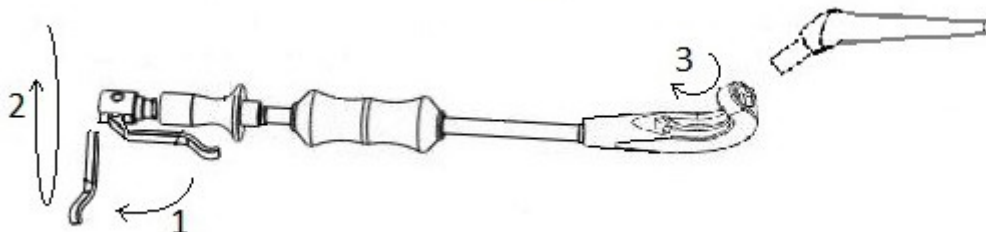


Fig. 9

### 9.3.2 APPLICATION and CLAMPING ( Fig.10 )

Slide ( 1 ) the tool as far as possible over the neck of the prosthesis.

#### Note:

To use the instrument safely and effectively, the orientation of the prosthesis **has to be** analyzed carefully and the EPM Mueller® Extractor **has to be APPLIED AXIALLY**.



For clamping, rotate ( 2 ) the jam case with the opened lever( at 90° to the axis) at the distal-end clockwise until resistance is felt. Close ( 3 ) the lever to attain maximal clamping force.

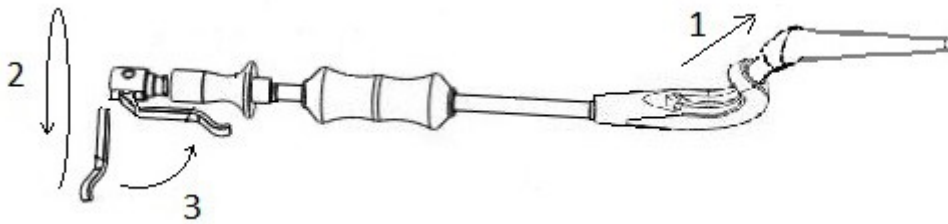


Fig. 10

### 9.3.3.EXPLANTATION (Fig.11)

The weight is placed at the end of the guidance tube closest to the prosthesis, and is then moved ( 1 )forcefully towards the distal end of the tool, impacting on the base of the handpiece. Repeat the moovements ( 1 lightly + 2 forcefully ) till the prosthesis will be dislocated.

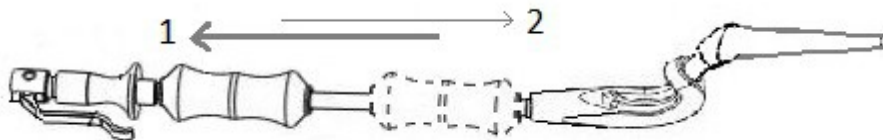


Fig. 11

#### Attention:

Do not use additional instruments with the EPM Mueller Extractor! ( as HAMMER )

### 9.3.4 DETACHMENT ( Fig.9 )

The extracted implant is removed from the tool with the same steps explained under OPENING of the instrument. (Fig. 9)

## 9.4. CLEANING and STERILIZATION

The new instrument: has to be cleaned up and disinfected before sterilisation.

### DISMANTLE

To disassemble look at picture 12 and 13.

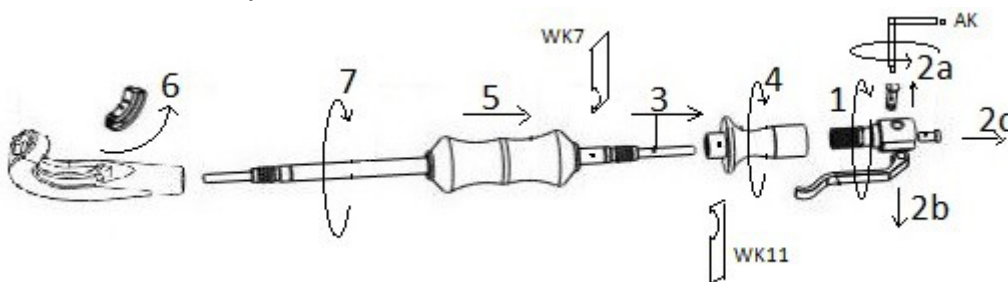


Fig.12

- 1. Completely unscrew (reverse clockwise) lever assembly ( jamcase ) of handpiece
- 2. Remove pinscrew, with the Allan key ( AK ) delivered, than lever, thereafter bolt with plasticinset with a narrow instrument ( pressure rod can be used )
- 3. Extract pressure rod
- 4. Detach handpiece by unscrewing completely from the guiding tube
- 5. Slide off the striking weight
- 6. Remove sliding spacer through rectangular space at the instrument head
- 7. Remove guiding tube by unscrewing completely from the instrument head

Further in case of stocked guiding tube in the handel or head after deshidratation of the blood can be used the wrence keys R7 ( WK7 ) and R11 ( WK11 ) as help for dismantling.

### Assemble

For Assamble, simply use reverse order.

The EPM Mueller® Extractor is by loosening the screw connections without any additional tools to dismantle or assamble, up to the jamcase, which is further disassembled with the supplied Allen key, into single pieces.

**ATTENTION:** use the bolt always with the plasticinset top!

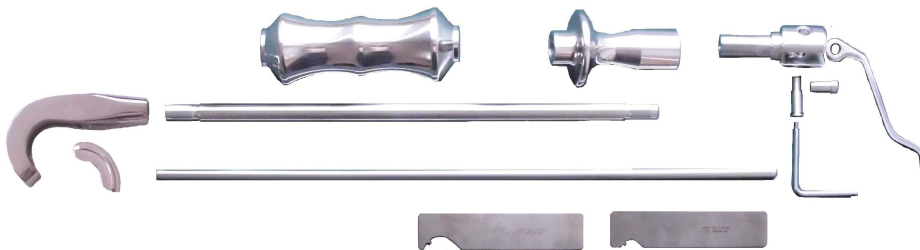


Fig. 13

### Preparation

Brand new instruments and those returned from repair must be removed from their transportation packaging before storing and / or inclusion in the instrument usage and processing cycle.

Before using, they must be send through the entire processing cycle in the same manner as used instruments.

### Cleaning

Always check cleaning results by visual inspection.

The passive layer of brand new instruments is necessarily still thin and so these instruments tend to critical treatment conditions than are older used instruments.

### Storage

Store it at room temperature in dry rooms. Condensate may cause subsequent corrosion damage.

Never store it near chemicals such as active chlorine which emit corrosive vapors.  
To avoid mechanical damage during processing, store it from the beginning in suitable racks or retainers.

### **Cleaning and Disinfecting**

Any residues should be removed.

Never immerse stainless steel instruments in a physiological salt ( NaCl ) solution, it leads to pitting and stress corrosion cracking.

Avoid long intervals between use and treatment for reuse.

For manual cleaning, active non-protein-fixing cleaners with or without antimicrobial effect and/or enzymes are to be used.

Regarding detergents and disinfectants, the manufacturer`s instruction concerning concentration, temperature and exposure time should always be strictly followed!

Use soft, lint-free cloths or towels, plastic brushes or cleaning guns for cleaning.

To prevent water spots (spotting), a final rinse using fully demineralised water is recommended. After this the instrument must be dried carefully immediately.

By machine-based cleaning, only validated machine cleaning and disinfecting processes ( DIN EN ISO 156883 and national guidelines) should be used.

### **Sterilisation**

It is important to use only sterilisation methods and sterilizers that allow validated sterilization processes conform national guidelines.

Sterilisation accesories and packaging materials must be selected in accordance with the items to be sterilised as well as with the sterilisation method used.

### **Steam sterilization**

Steam sterilization is performed with saturated steam, usually at 134 °c.

In the case of an application of the fractional vacuum procedure, the sterilization with the 134 ° C/2-program is to be performed with a min. holding of 5 minutes.

## **9.5. CARE INSTRUCTIONS**

Apply instrument oil to tube, rod and screws periodically to minimize wear friction.

## **9.6. TECHNICAL DATA**

- Instrument can be used with the following tapers:  $\text{Æ } 8 - \text{Æ } 16$ ,
- Striking weight: 1.0kg (2,2 lb) standard; 1,7kg (3,74 lb)
- Total weight: 2,5 kg (5.5 lb) with 1,0kg Striking weight and 3,2 Kg ( 7,04 lb ) with 1,7 Kg Striking weight
- Total length: 550mm (21,7 inches) standard; 635mm (25 inches) long variant
- Hitting distance: 205mm (8.1 inches) standard; 275mm (8.08 inches) long

## 9.7. ACCESSORIES

Art No.	Description	
<b>1001.18.SA2</b>	EPM Mueller® Stem Extractor SA2 Standard for antero-approche	
<b>1001.18.SA2.L</b>	EPM Mueller® Stem Extractor SA2 Long ( 7 cm longer )	
<b>1001.18.SA2.L.S</b>	EPM Mueller® Stem Extractor SA2 Long ( 7 cm longer ) and with 1,7 kg weight	
1001.18.2.1.SA2	Head of the tool SA2	
1001.18.2.4.2	Slider spacer SA2	
1001.2.17.2.ST	Guiding Tube ST2	
1001.2.17.2.L	Guiding Tube L2 ( 7cm longer )	
1001.2.15.ST	Pressure Rod ST	
1001.2.15.L	Pressure Rod L ( 7 cm longer )	
1001.2.09.N	Striking Weight N ( 1kg/2.2 lb )	
1001.2.09.S	Striking Weight S ( 1,7kg/3.74 lb )	
1001.2.11.2.ST	Handpiece ST2	
1001.2.12.2.ST	Jamcase ST2	
1001.2.07.2	Bolt with plasticinset	
1001.2.13.4	Pin screw	
1001.2.13.A2.5-3	Allan key 2.5-3	
1001.2.14.2	Lever	
1001.15.2.13.R7	Wrence Key R7	
1001.15.2.13.R11	Wrence Key R11	
1015.15.12.BS	Coated aluminum basket with lid 62/24/7cm	

**9.8. WARRANTY, SERVICE:**

24 month Exchange warranty after invoice date.

**ATTENTION:** not following the use, cleaning and care instructions described,  
expire the Warranty!

**International / European / German Sales,**

**Hotline, Warranty, Service:**

EPM Endo Plant Müller GmbH  
Fon: +49(0)6022-25419  
Fax: +49(0)6022-25419  
Schleusen Str.8, 63839 Kleinwallstadt  
E-Mail: [epmmueller@aol.com](mailto:epmmueller@aol.com)

[www.epm-mueller.de](http://www.epm-mueller.de)

**10. Declaration of conformity EG/CE**

F  
321  
10001

Konformitätserklärung  
Declaration of Conformity

Wir / We EPM Endo Plant Müller GmbH  
 . Schleusen Str.8 , D- 63839 Kleinwallstadt

Erklären in alleinige Verantwortung, dass  
 Declare on our own responsibility that

Das Medizinprodukt „EPM Mueller® Extractor“ Ausschlagwerkzeug für Hüftgelenkprothesen  
 The medical device „EPM Mueller® Extractor“ Extraction Tool for HIP Prosthesis

Art.-Nr. 1001.5. AU; 1001.5.AU2  
 Produkt Identifikation UMDNS ( 15-580 ) : 5000.E  
 . EPM Mueller® Extractor AU/AU2, 1000.1005.2000

Art.-Nr. 1001.6. S; 1001.6.S2  
 Produkt Identifikation UMDNS ( 15-580 ) : 5000.E  
 . EPM Mueller® Extractor S/S2, 1000.1006.2000

Art.-Nr. 1001.18. SA2  
 Produkt Identifikation UMDNS ( 15-580 ) : 5000.E  
 . EPM Mueller® Extractor SA2, 1000.1018.2000

Allen Anforderungen der Richtlinie 93/42/EWG entspricht.  
 Meets all the provisions of the directive 93/42/EEC witch apply to him.

Angewandte harmonisierte Normen:  
 Applied harmonized standards DIN EN ISO 9001:2012, DIN EN ISO 13485:2016

Andere normative Dokumente:  
 Other normative documents GHTF (SG1) DOC No. N029R11, 02.02.2002  
GHTF (SG3) DOC No. N 99.10, 29.06.1999

Angewandte nationale Normen: MPG, MPV  
 Applied national standards

Konformitätsbewertungsverfahren:  
 Conformity assesment procedure:

Medizinprodukt der Klasse I im Sinne der EG-Richtlinie 93/42/EWG, Anhang IX.  
 Medical device class I, 93/42/EEC, Annex IX

CE

Kleinwallstadt, den 15.05.2019

E.J.Müller  
 Dr.med.,Dr.med.stom.IMFKL.  
 Geschäftsführer